

CCIS JD302

CCIS JD 300/302

CCIS 300/302 consists of an HDPE geonet drainage core with a filter fabric bonded to one or both sides. The geonet drainage core is virtually crush proof, yet flexible enough to conform to irregular surfaces. Due to the crush proof nature, geonet drainage composites can be used in the most extreme cases with heavy loads and/or heavy vehicular traffic.

CCIS JD300

Consists of a heavy duty high density polyethylene geonet drainage core with its ridges heat fused to a layer of non-woven filter fabric. The filter fabric retains soil or sand particles as well as freshly placed concrete or grout, allowing filtered water to pass through to the drainage core. CCIS JD300 provides drainage from one side only.

CCIS JD302

Identical to CCIS JD302 in physical properties with the addition of a layer of filter fabric to the back side providing drainage and filtration from both sides.

APPLICATIONS

- RETAINING WALLS
- PLAZA DECKS
- PLANTERS & GREENROOFS
- UNDER SLABS
- BRIDGE ABUTMENTS

Please call you local CCIS Geosynthetic Specialist for all your geosynthetic needs.

Spruce Grove, Alberta
(780) 962-6559

Clairmont, Alberta
(587) 771-0990

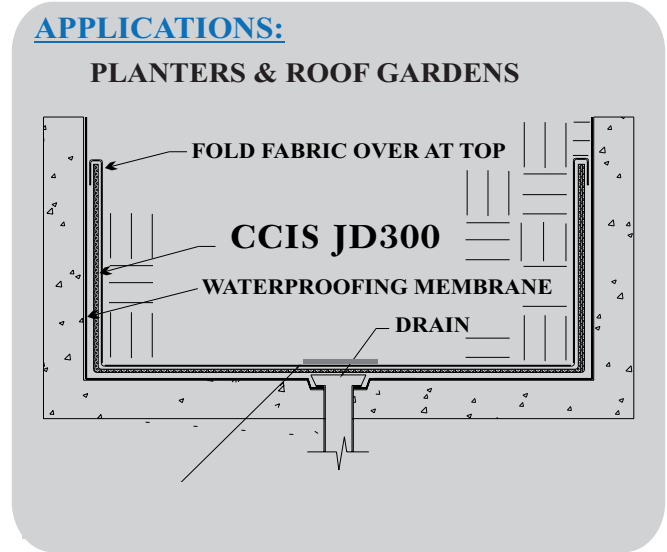
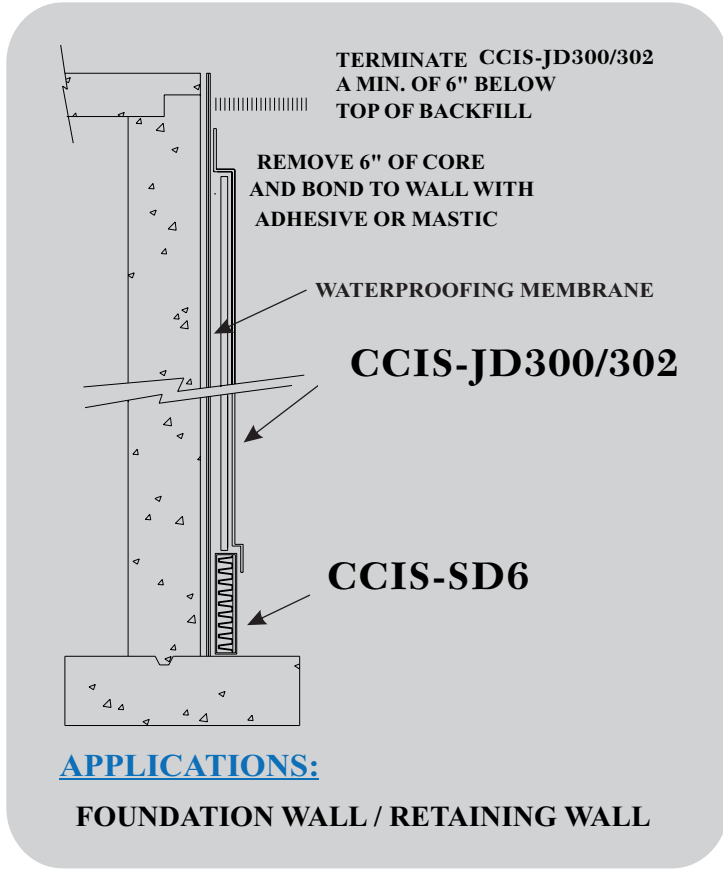
Fort St. John, BC
(778) 844-0299

Terrace, BC
(250) 922-4018

Prince George, BC
(587) 357-4328

Kamloops, BC
(604) 860-5473

Applications and Properties



Physical Properties

Core

Compressive Strength (ASTM D-1621)	40,000 psf (1,915 kNm ²)	
Thickness (ASTM D-1777)	.25 in. (6.35 mm)	
Flow (Hydraulic gradient =1) (ASTM D-4716)	8.5 g/min/ft (106 L/min/m)	
	300	302
Roll Width	4 ft (1.22 m)	4 ft (1.22m)
Roll Length	75 ft (22.86m)	75 ft (22.86m)
Roll Weight	70 lbs.	80 lbs.

Fabric

	300 / 302 (2 sides) / 1000 (front)
Flow (ASTM D-4491)	140 gal/min/ft ² (5704 L/min/m ²)
CBR Puncture (ASTM D-6241)	250 lbs. (1.113 kN)
AOS (EOS)	70 U.S. Sieve (.212 mm)
Grab Tensile (ASTM D-4632)	100 lbs. (.445 kN)

Please call you local CCIS Geosynthetic Specialist for all your geosynthetic needs.

Spruce Grove, Alberta
(780) 962-6559

Clairmont, Alberta
(587) 771-0990

Fort St. John, BC
(778) 844-0299

Terrace, BC
(250) 922-4018

Prince George, BC
(587) 357-4328

Kamloops, BC
(604) 860-5473